

THE ULTIMATE HOME EXPERIENCE

Give your home living room a unique atmospheric twist with the USB LED MOOD LIGHT by tsumi. Designed with a safe adhesive backing, this colorful backlight can be fixed directly onto the back of your TV or computer screen, enhancing your home theater and easing light-induced fatigue. It fits screens up to 65" and includes a wireless remote controller, which provides you with the freedom to customize your selection of 16 colors and find the perfect brightness, rhythm, and color scheme.

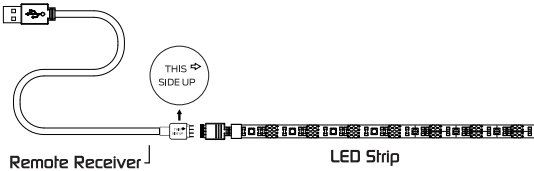
- 16 Color Selection
- Adjustable Color Intensity & Brightness Via Remote Control
- Relieve Eyes From Fatigue
- Create Ambiance & Unique Atmosphere



1

PRODUCT OVERVIEW

USB - to TV Cable (Power Source)



Wireless Remote Control



CR2025 cell battery (included)

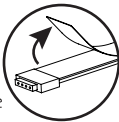
When Remote Control operation becomes slow, it is time to change the battery. Compatible with CR2025 and CR2032 battery types.

2

INSTALLATION

NOTE: Please make sure that the back surface of your TV is clean from dust, oils, or fingerprints before attempting to apply your LED Mood Light. Use an alcohol-based cleaning cloth to wipe the back of your TV.

1. Locate the USB port on the back of your TV. If your TV does not have a USB port, you may use any other USB power source.
2. Make sure that you are satisfied with the coverage area of the LED strip prior to peeling off the adhesive tape. Make sure that the USB cable is placed near the USB port and has enough slack to reach safely. The Remote Receiver must also be visible in order to work properly. See below.
3. Peel off the backing of the strip to expose the adhesive.
4. Apply to the cleaned surface of the back of TV. Press down for a couple of seconds to secure.
5. Connect the LED Strip with the USB Cable and insert the cable into the USB port.
6. Once connected, remove the protective plastic strip from remote control to activate the battery.
7. Press the ON button to turn on the LED strip.
8. Refer to the color combinations settings on the remote to customize your LED strip.



over →

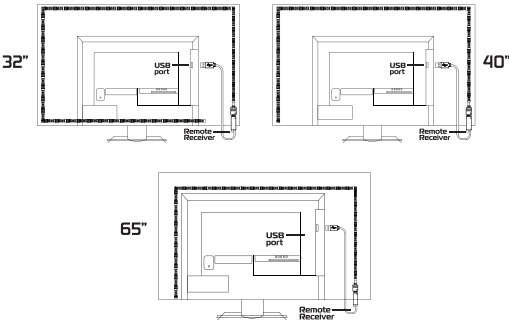
3

ASSEMBLY

- Connect the LED strip with the USB cable.



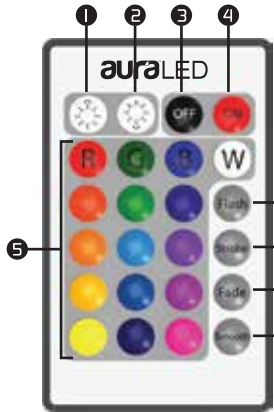
See below for suggested placement depending on your TV size:



4

WIRELESS REMOTE CONTROLS

Buttons 1 and 2 can be used to control the effects and speed of Buttons 6, 7, 8, 9.



1. Brightness (UP) / Flash Control (QUICK)
2. Brightness (DOWN) / Flash Control (SLOW)
3. Power OFF
4. Power ON
5. LED color buttons 16 colors
6. Flash (Changes Instantly) Red > Green > Blue
7. Shrobe (Changes Gradually) Red > Green > Blue
8. Fade (Changes Gradually) Red > Green > Blue > Yellow > Light green > Purple > White
9. Smooth (Changes Instantly) Red > Green > Blue > Yellow > Purple > Light Green > White

SPECIFICATIONS

Wireless Remote Control

Coverage area: up to 26 feet (8m) max
Battery type: CR2025 cell battery

5

ABOUT THE AURA LED APP

Download the AURA LED App from either the Google Play Store or the Apple App Store. From there, you can control your LED strip anywhere directly from your phone or tablet.

- Allows you to choose from a wide range of 16 colors.
- Enables you to save default settings such as favorite colors and illumination patterns
- Enables you to match the rhythm of any of your own music or online streaming audio.
- Can also sync LED illumination with your voice, in the app's microphone voice detection feature.
- Lets you to set custom light-activated alarms and sync to your schedule and lifestyle.

USING THE AURA LED APP

1. Download the Aura LED App from the App Store or Google Play Store.
2. Open the app and select an option from the menu in the upper left-hand corner of your screen.
3. The LED strip will appear on your screen. You can now control the LED strip.
4. Tap on the link icon to connect or disconnect a specific LED strip.
5. Use the bottom navigation buttons to manually adjust colors, illumination style/pattern, and control the lights with your music or voice.



6

SPECIFICATIONS CONT.

LED Strip
Input: DC 5V/0.5A~2A
Power Consumption: 25W ~ 10W
LED chip: 5050, RGB
Color: 16 colors with 4 Mood light settings
Beam Angle: 120 degrees
LED strip: 30 LED lights / 6.5 foot (1.98m)
Back adhesive: 3M self adhesive
Working temperature: -20°C ~ 45°C
Working Humidity: 0% ~ 80% RH
Usage: 40,000 hours

IMPORTANT SAFEGUARDS

- Keep LED strip away from flammable objects.
- Always make sure that all parts have been connected properly to avoid short circuit.
- Check to make sure the voltage of the power source (USB) is 5V.
- Do not connect the LED strip to the power source until all of the installation have been completed.
- Do not cut any part of the LED strip or its connectors.
- Always make sure that the Remote Receiver is not covered or blocked. This will ensure proper operation using the remote control.
- If this product malfunctions, please do not try to repair it yourself; take it to a qualified electrician.

www.tsumi.com



tsumi® auraLED™ Mood Light w/App. Distributed by tsumi inc. NY, NY, 10016. ©Copyright 2018 tsumi. All Rights Reserved. Made in China, Samsung and Galaxy S are both registered trademarks of Samsung Electronics Co., Ltd. All pictures shown are for illustration purpose only. Actual product may vary due to product enhancement. Other trademarks and trade names on this package are those of their respective owners.