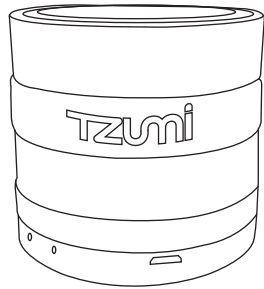


TZUMI



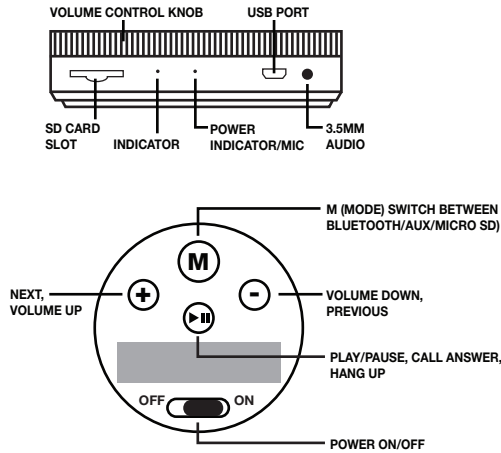
SuperBass

Mini-Wireless Speaker



User Guide

PRODUCT OVERVIEW



PACKAGE CONTENTS

- Superbass Speaker
- Micro USB cable
- AUX line-in cable

1

CHARGING THE SPEAKER

This speaker has an internal rechargeable battery. The battery must be fully charged prior to use. Charging time is approximately 1.5 hrs. You may play music while your device is charging.

NOTE: Micro USB cable does not transfer data to Micro SD card.

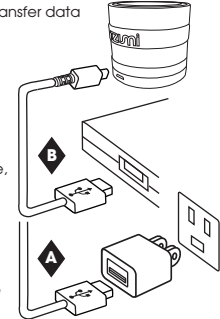
Red light ON – Charging
Red light OFF – Fully charged

A Via AC Adapter Wall Charger

Using the provided Micro USB cable, connect the speaker (Micro USB port) to the AC Adapter (USB port).

B Via Computer

Using the provided Micro USB cable, connect the speaker to the computer or laptop (USB port).



PAIRING THE SPEAKER TO BLUETOOTH DEVICE

Make sure the Bluetooth function is available on your cell phone. Specific pairing procedures will be different depending on different cell phone. For detailed information, please refer to your cell phone's User Guide.

- If no device connection is made within 5 minutes of the speaker being switched on, the speaker will automatically be switched off to save power.
- After a successful pairing devices will memorize each. Therefore, no pairing will be needed next time.

over ↗

2

PAIRING TO BLUETOOTH DEVICE (CONTINUED):

1. Turn ON the speaker by pressing the Power button.
2. Keep the distance between the cell phone and the speaker within 3 feet (for pairing only).
3. Activate the Bluetooth function of the cell phone, to search for the Bluetooth devices. Select "Super Bass" from the list and wait for the audible tone. No Code is required.
4. Press "yes" or "enter" key to confirm the successful pairing.
5. After the successful connection, the tone will sound and the blue light of the speaker will flash quickly twice every four seconds.

CONNECTING TO OTHER BLUETOOTH DEVICES

Note: Your speaker can only be connected to **one** Bluetooth device at a time.

1. In order to connect to the other Bluetooth device, you must first close the current Bluetooth connection.
2. Follow the above steps (under **PAIRING TO BLUETOOTH DEVICE**) to pair your speaker to another Bluetooth device.

FAQ's

NOTE: Most device issues can be resolved by restarting the unit by turning it OFF and back ON.

Q: The music will not play from Micro SD Card.

A: Make sure your music is in MP3 format and SD card was formatted prior to first use.

Q: Cannot hear any audio.

A: Press M button to change modes.

3

PLAYING MUSIC

Playing Audio via Aux cable

1. Plug Aux cable into port of the device.
2. Press **M** button on the controls to switch into Aux mode.

Playing Audio via Micro SD card

1. Save songs on Micro SD card as MP3 format.
2. Insert Micro SD card into slot.
3. Press **M** button to switch into Micro SD card mode.
4. Turn on the device and enjoy your music.

SPEAKER CONTROLS

Listening to music

Play music/Pause _____ Press/click ▶ ||

Go to next song _____ Press/click +

Go to previous song _____ Press/click -

Changing the volume

Rotate volume knob right to increase volume.
Rotate volume knob left to lower volume.

To increase volume _____ Press and hold +

To lower volume _____ Press and hold -

Press **M** to switch audio mode (Bluetooth/Aux/Micro SD)

4

IMPORTANT SAFEGUARDS

- Do not use this unit for anything other than its intended use.
- Keep the unit away from heat source, direct sunlight, humidity, water or any other liquid.
- Do not expose the device to extremely high or low temperatures, as it may damage the battery.
- Do not operate the unit if it has been wet or moist to prevent against electric shock and/or injury to yourself and damage to the unit.
- Do not use the unit if it has been dropped or damaged in any way.
- Repairs to electrical equipment should only be performed by a qualified electrician. Improper repairs may place the user at serious risk.
- Keep the unit out of reach of children.
- This unit is not a toy.

BATTERY DISPOSAL:

This product contains a lithium polymer battery. Lithium Polymer batteries are environmentally safe when fully discharged. Please refer to your local and state laws for battery disposal procedures.

SPECIFICATIONS

Bluetooth Version	Bluetooth V2.1 + EDR
Distance	Up to 33ft (10m)
Battery	Rechargeable lithium battery: 400mAh
Frequency	150HZ-20KHZ
Standby Time	Up to 250 hours
Charging Time	1.5 hours
Play Time	up to 5 hours
Input	DC 5V

TZUMI® BT SUPERBASS Distributed by TZUMI® INC. NY, NY 10016
©Copyright 2015 TZUMI® All Rights Reserved. Made In China.

The Bluetooth trademarks are owned by Bluetooth SIG, Inc. Other trademarks and trade names in this document are those of their respective owners. © 2015 Bluetooth SIG, Inc. Subject to change without prior notice.