

tzumi®

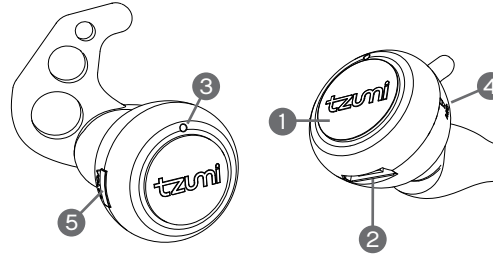


Handsfree MicroEarPiece



User Guide

PRODUCT OVERVIEW



PACKAGE CONTENTS

- Bluetooth Micro Ear Piece
- Micro USB cable

1. Power / Multifunction ON/OFF, Call Answer, Reject, Redial, Hang Up
2. Charge
3. LED Indicator
4. Microphone
5. Volume Up/Down

POWER ON/OFF

To power ON: Press and hold the Multifunction button for about 3 seconds until the device flashes blue. You should hear a five tone sound.

To power OFF: Press and hold the Multifunction button for about 3 seconds until the device lights turn off. You should hear a five tone sound.

1

CHARGING MICRO EAR PIECE

The Micro Ear Piece has an internal rechargeable battery. The battery must be fully charged prior to use. Charging time is approximately 1 hr. Your Micro Ear Piece cannot be used while charging.

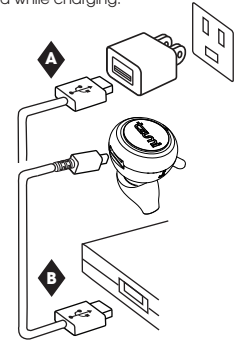
Red light ON – Charging
Red light OFF – Fully charged

A Via AC Adapter Wall Charger

Using the provided Micro USB cable, connect the Micro Ear Piece (Micro USB port) to the AC Adapter (USB port).

B Via Computer

Using the provided Micro USB cable, connect the Micro Ear Piece to the computer or laptop (USB port).



PAIRING THE MICRO EAR PIECE TO BLUETOOTH DEVICE

Make sure the Bluetooth function is available on your cell phone. Specific pairing procedures will be different depending on different cell phone. For detailed information, please refer to your cell phone's User Guide.

- If no device connection is made within 10 minutes of the Micro Ear Piece being switched on, the Micro Ear Piece will automatically be switched off to save power.

over

2

PAIRING TO BLUETOOTH DEVICE (CONTINUED):

- After a successful pairing devices will memorize each. Therefore, no pairing will be needed next time.
1. Keep the distance between the cell phone and the headphones within 3 feet (for pairing only).
 2. Turn on the Bluetooth headphones by pressing the multifunction button for 1 second, the announcement "Power ON" will sound and the blue light will begin to flash quickly.
 3. Activate the Bluetooth function of the cell phone, to search for the Bluetooth devices.
 4. Approximately after 2 seconds after "Power ON", search for "Tzumi-Headphones". The announcement "Pairing" will sound as blue and red lights will flash quickly. Next, select "Tzumi-Headphones" in the device list displayed.
 5. Only for some electronic devices: Press "yes" or "enter" key to confirm the successful pairing.
 6. After the successful connection, the blue light of the headphones will flash every 8 seconds.

CONNECTING TO OTHER BLUETOOTH DEVICES

Note: Your Micro Ear Piece can only be connected to **one** Bluetooth device at a time.

1. In order to connect to the other Bluetooth device, you must first close the current Bluetooth connection.
2. Follow the above steps (under **PAIRING TO BLUETOOTH DEVICE**) to pair your Micro Ear Piece to another Bluetooth device.

3

MICRO EAR PIECE CONTROLS

Answer a call

Press the Multifunction button once.

Reject a call

Press the Multifunction button twice.

End a call

Press the Multifunction button once.

Redial the last call

Double-press the Multifunction button while in standby mode. The cell phone will redial the last number.

Volume

Keep pressing the Volume button to increase the volume. When it reaches its maximum volume, the volume will decrease.

BATTERY DISPOSAL:

This product contains a Lithium Polymer battery. Lithium Polymer batteries are environmentally safe when fully discharged. Please refer to your local and state laws for battery disposal procedures.

IMPORTANT SAFEGUARDS

- Do not use this unit for anything other than its intended use.
- Keep the unit away from heat source, direct sunlight, humidity, water or any other liquid.
- Do not expose the device to extremely high or low temperatures, as it may damage the battery.
- Do not operate the unit if it has been wet or moist to prevent against electric shock and/or injury to yourself and damage to the unit.
- Do not use the unit if it has been dropped or damaged in any way.

4

- Repairs to electrical equipment should only be performed by a qualified electrician. Improper repairs may place the user at serious risk.
- Keep the unit out of reach of children.
- This unit is not a toy.

SPECIFICATIONS

Bluetooth Version	Bluetooth V2.1 + EDR
Distance	Up to 33ft (10m)
Battery	Polymer Lithium-Ion 3.7V 40mAh
Frequency	2400—2483.5MHz
Standby Time	Up to 40 hours
Charging Time	1 hour
Talk Time	up to 4 hours
Input	DC: +5.0±0.25V
Driver Unit	8mm
Sensitivity	92dB
Rated power	5 mW

tzumi® BT Micro Ear Piece Distributed by tzumi® INC. NY, NY 10016
©Copyright 2015 tzumi® All Rights Reserved. Made in China.

The Bluetooth trademarks are owned by Bluetooth SIG, Inc. Other trademarks and trade names in this document are those of their respective owners. © 2015 Bluetooth SIG, Inc. Subject to change without prior notice.